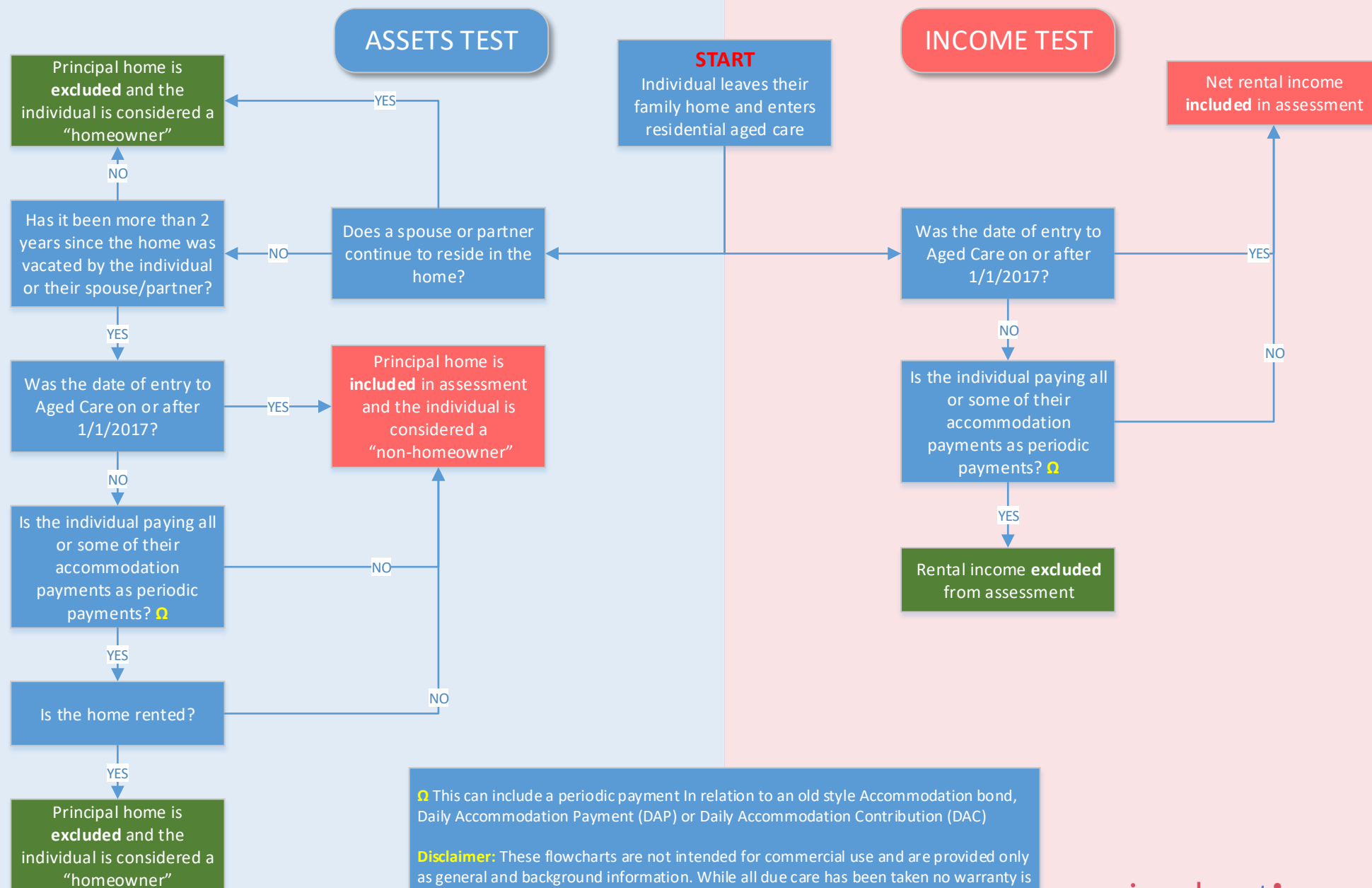


1

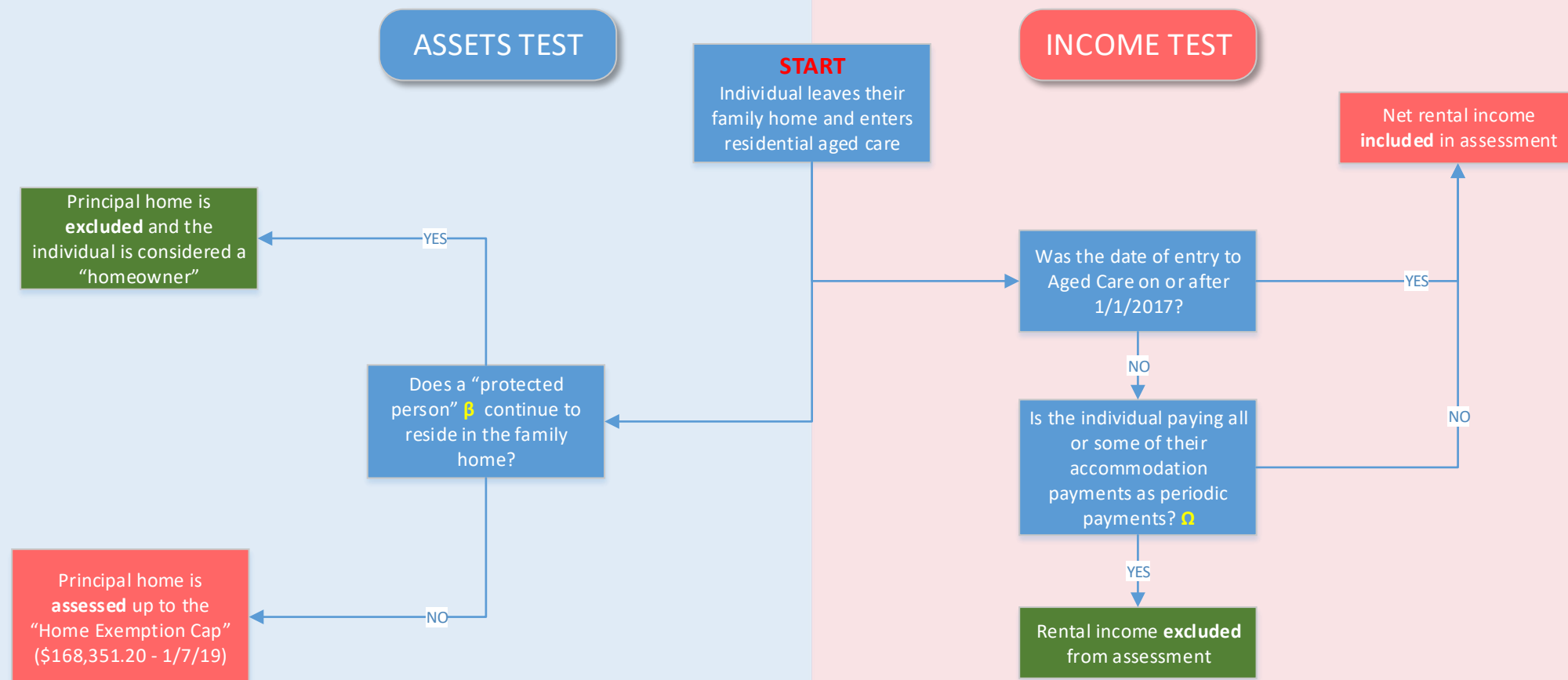
# Principal or Family Home Treatment: Age Pension

When an individual leaves their home to enter Aged care: Age Pension impact.



# Principal or Family Home Treatment: Aged Care

When an individual leaves their home to enter Aged care: Impact on Aged care contributions.



<sup>Ω</sup> This can include a periodic payment in relation to an old style Accommodation bond, Daily Accommodation Payment (DAP) or Daily Accommodation Contribution (DAC)

<sup>β</sup> A "protected person" is:

- a partner or dependent child, or
- a carer who is eligible to receive an Australian Government income support payment and who has lived in the home with the individual for the past 2 years, or
- a close relation who is eligible to receive an Australian Government income support payment and who has lived in the home with the individual for the past 5 years